

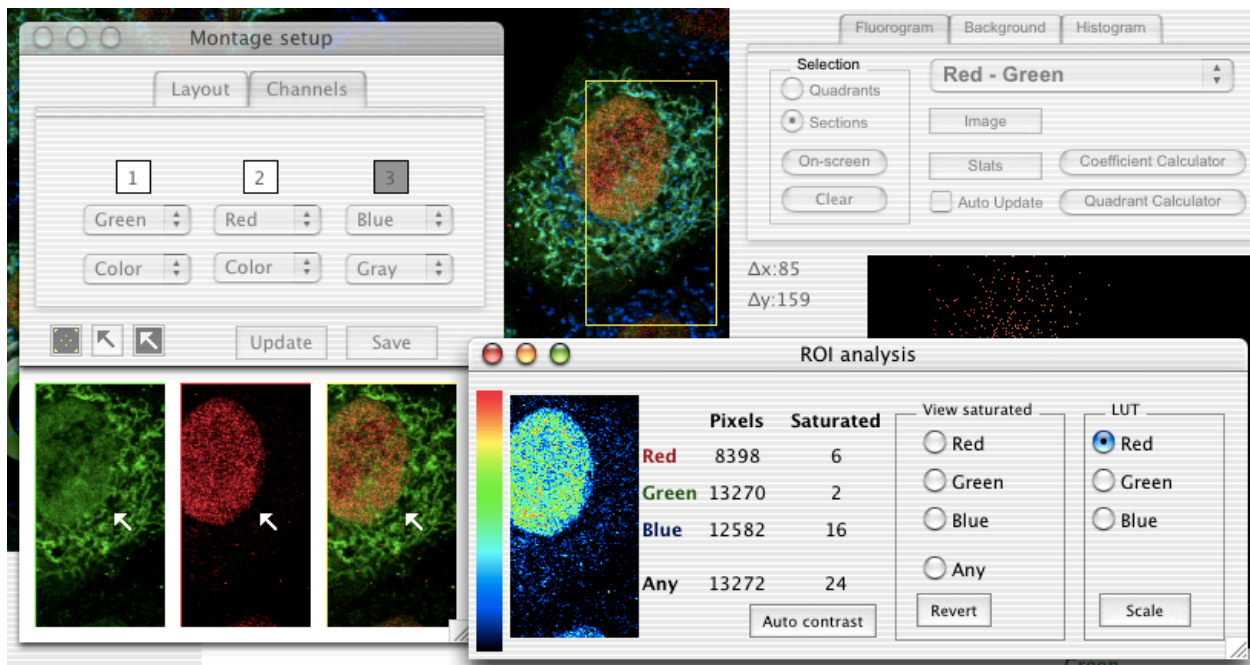
What's New since version 1.0.5?

Compared to version 1.0.0 this version has the following features:

1. Tools/ROI Analysis: new feature, Look-up-table for each channel, blue=>red with increased intensities
2. Main screen/ROI selection: The Shift key pressed results in perfects squared/circular ROI:s
3. Main screen/ROI selection: Δx and Δy are displayed to indicate the current size of ROI
4. Tools/Montage Window: New feature called Parallel Cursor Arrows, displays arrows in all three or four channel images. Stamp the arrows by pressing the mouse button to save imprinted arrows.
5. Tools/Montage Window: The windows will be displayed in front of other windows.
6. Main screen/Save Button: The button now saves the image only instead of a screen shot. To save a screen shot (with ROI, Fluorogram etc) use the Save Screen command under File in the menu bar.
7. Start splash screen/At startup the program checks if there is a more current version available online.

Feedback

For support, first visit the support site at www.coollocalizer/support.asp. Direct further support questions, suggestions, and bug reports to support@coollocalizer.com



New since v.1.0.5 Screenshot illustrating Montage setup with Parallel Arrows (white), ROI analysis with LUT tool, and $\Delta x/\Delta y$ ROI coordinates.